



*Sustainable Wealth, One Trade at a Time*

## Guide for migration to WolfpackBOT Offline Version

Version: 2021-01

### General information on WolfpackBOT Offline Version

Each WolfpackBOT user has received an email containing the offline-password for the email that they have registered with WolfpackBOT. WolfpackBOT Offline Version does not authenticate against their online servers, but validates against the offline password. No 2FA is required any more.

Trading functionality is exactly the same as in the Online Version. The offline version does not expire.

### Migrating from WolfpackBOT Online to Offline Version

WolfpackBOT will move from an online version to an offline version during January 2021. If you are running the online version, and want to continue with the offline version, the following configuration will be kept / needs to be updated:

Configuration that will be kept:

- Positions, Orders, Capital history
- Strategies
- Backtest runs

Configuration that will get lost and needs to be reentered:

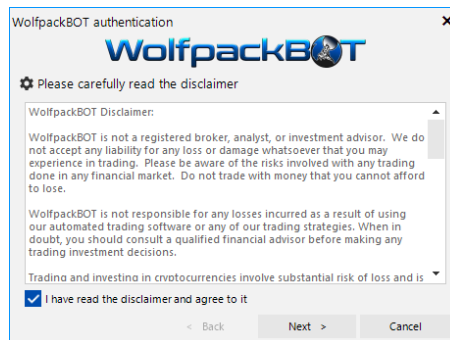
- API Keys
- Enabled Base Pairs and configuration per base pair (Strategy, Strategy override values, Candlesticks, Coin selection, ...)
- Misc settings (under the "Other" tab on the Config page)

### Installation instructions

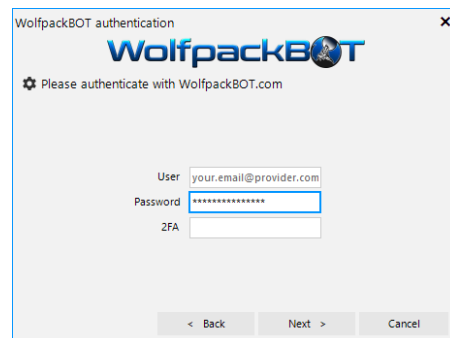
Download the installation ZIP archive to your local machine and extract the contents to any location. Start WolfpackBOT.exe

### Login instructions

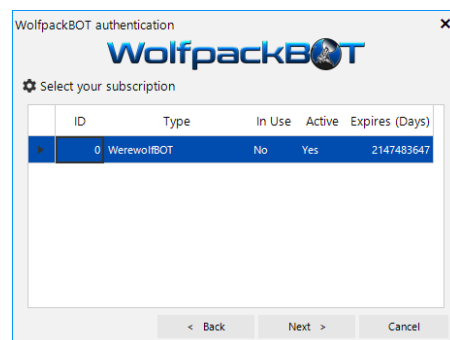
- 1) Accept the disclaimer and click "Next >"



- 2) Enter your offline login credentials and click “Next >”
  - a. User: your email address
  - b. Password: the offline password you received via email in January 2021
  - c. 2FA: not required any more. Keep empty



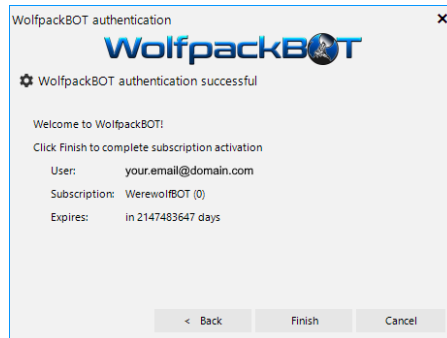
- 3) Click “Next >” again.



- 4) Click “Finish” to activate your offline license



*Sustainable Wealth, One Trade at a Time*



A new login will not be required on subsequent application starts.